



# **Fair Tear and Wear Guide Truck Condition Appraisal On return from leasing/ rental agreements.**

Definition of condition in accordance with the contract.

**JUNGHEINRICH**  
Machines. Ideas. Solutions.

# Comparisons of specified and actual conditions make for clear relationships.

In most cases a leasing or rental agreement ends with the return of the vehicle. Often the lessor and lessee have different perceptions regarding the condition and wear level of the truck. This brochure is an important guideline for both parties of the agreement for reliably and clearly evaluating the condition of trucks that are being returned in terms of age and usage according to contractual agreements – generally based on a usage analysis agreed to by both parties at the start of the contract – and creating transparent conditions for return. The brochure provides examples with pictures and descriptions of

- a) what is acceptable damage (“required condition”) in terms of wear resulting from age and
- b) what is meant by “unacceptable” damage (for which the lessee must be invoiced due to the cause of the wear.

## **Truck Inspection**

As part of returning the truck, an inspection is conducted by the lessor. This inspection should take place at the location where the truck is used if possible, but in any case no later than immediately upon return of the truck at a leasing location. For this inspection the fork lift truck is inspected for completeness and to ensure it is working properly. In addition, its main components are examined for wear and the degree of wear is determined. The “required condition” describes typical wear associated with age – according to the usage that was defined and fixed in writing before the beginning of the contract. Everything that goes beyond age-associated wear and/or is attributable to damage by force is categorised as “unacceptable”. If any such “unacceptable” damage is discovered, it will be documented in writing and given to the lessee with a cost estimate. The lessee is responsible for the associated costs to remedy the damage in accordance with the contract.



### **Delivery specification**

As a general rule trucks that have been leased for use must be returned according to the delivery slip or order confirmation complete including accessories and cleaned of coarse dirt inside and out. Pay special attention to accessories, for example

- Attachments (sideshift, fork extensions, clamping devices and cabin parts)
- Battery/batteries with accessories (Aquamatik, water container, battery roller stand)
- Charger
- Accompanying papers (operating instructions, service manual, spare parts list, UVV manual)
- Burn-off ovens for diesel particle filter



# Condition of individual assemblies.

## Motor

### Required condition:

- Fully functional
- Starter motor and battery to be fully functional
- Clean fuel remaining to load/unload the machine
- Tank cap fully functional
- Clean and serviced Air Cleaner
- Oil and battery fluid levels according to the operating manual
- Particle filter complete according to delivery specification and fully functional



### Unacceptable:

- Motor parts damaged by external influences
- Leaks on the motor (for example oil and/or coolant)
- Exhaust has noticeable operating volume or a distinct gas trail
- Excessive wear due to lack of maintenance



## Fork carriage

### Required condition:

- Hydraulic ports fully functional and with no leaks or serious pipe work abrasions.



### Unacceptable:

- Fork carriage bent
- Load guard deformed
- Fork stops (tips) not functioning properly
- No serious abrasions to hydraulic pipework



## Forks

### Required condition:

- Fork locking device present and fully functional
- Fork stop screws present
- Wear is within the wear limit, max. 10 % of the fork shank worn (for example with a fork thickness of 40 mm, wear down to > 36 mm is acceptable)



### Unacceptable:

- Below the wear limit (more than 10 % wear)
- Fork bent/changes in shape made by customer
- Frayed or sharp edges in the front



## Seat

### Required condition:

- Seat (including seat contact protection) fully functional in all positions
- No holes or tears in the upholstery
- Belt fully functional as a restraint system in accordance with UVV (lock is fully functional in a tensile test, no cuts in the belt)



### Unacceptable:

- Missing seat parts (for example rear cover)
- Holes or cracks in the padding
- Restraint system missing or not functional



## Axles

### Required condition:

- Fully functional with no leaks
- No external damage and/or noticeable noises
- No foreign objects present



### Unacceptable:

- Not fully functional
- Leaks or external damage



## Rear weight

### Required condition:

- In original condition mechanically
- Protective mesh in front of fan and connecting bolts present and fully functional



### Unacceptable:

- Ruptures in greycast iron
- Mechanical changes (for example load increases)
- Connecting bolts and/or protective mesh in front of fan deformed or not present



## Tiller

### Required condition:

- Tiller complete and fully functional in all operations
- Gas compression spring (automatic vertical position)



## Sideshift

### Required condition:

- Fully functional including connections
- No leaks



## Brakes

### Required condition:

- fully functional in accordance with UVV (uniform response left and right during travel without any effect on the steering)
- Handbrake fully functional with no missing parts



### Unacceptable:

- Full functionality not provided
- Cracks, deformities and/or holes



### Unacceptable:

- Sideshift frame bent
- Hydraulic ports worn, deformed or leaking



### Unacceptable:

- Brake systems not fully functional (service brake, electric motor braking, handbrake and deadman switch and tiller head switch for manually guided trucks)
- Parts of brake systems missing
- Broken handbrake lever and torn cables





## Wheels and rollers

### Required condition:

- Tyres/rollers resting firmly on the rim and above the UVV wear limit
- Rims are not deformed, all wheel bolts are present
- Fully functional/no foreign objects



### Unacceptable:

- Thermal deformities on the running and side surfaces
- Pieces broken out and/or significant cuts
- Remaining profile below the UVV wear limit



## Lights and headlights

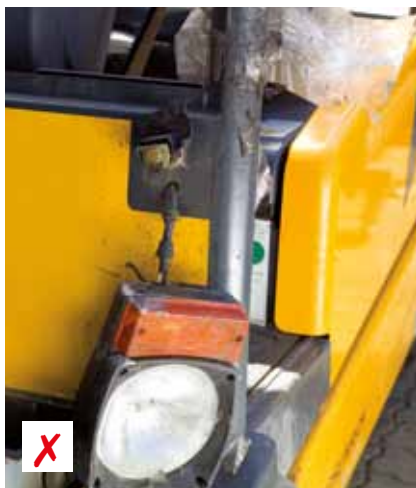
### Required condition:

- Complete according to the delivery specification and fully functional
- Plastic housing, supports and glass body undamaged



### Unacceptable:

- Missing or broken lens covers headlights
- Headlight housing broken
- Cracks or breaks in the glass body



## Mast

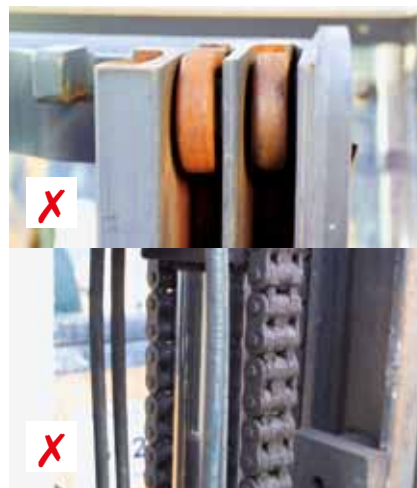
### Required condition:

- Hydraulic hoses and ports fully functional
- Chains fully functional and elongation within the tolerance range (max. 3%)
- Mast cylinder fully functional



### Unacceptable:

- Deformities on mast profiles and/or mast braces
- Broken rollers, for example due to dry running (indicated by obvious wear in the mast profiles)
- Mast cylinder mechanically deformed
- Mast cylinder has chrome-coloured scoring or grooves (pressure load)
- Seals leak



## Workplace

### Required condition:

- Steering wheel and steering wheel spinner knob fully functional
- Hydraulic lever fully functional
- Control displays fully functional
- Base plate fully functional
- Panelling has no holes, cracks or broken places



### Unacceptable:

- Pieces broken out of hydraulic lever (and/or a significant amount of play)
- Control displays are not fully functional or there are significant scratches in the display
- Base plate not fully functional
- Antislip mat missing
- Panelling is damaged





## Chassis

### Required condition:

- Protective and cover plates present and fully functional
- Battery side parts present with no significant deformities



### Unacceptable:

- Mechanical deformities on bearing parts
- Overhead guard or struts for overhead guard deformed
- Plastic parts have pieces broken out or other significant deformities
- Significant residue of stickers or even paint that has been applied
- Mechanical deformities on the covers



## Cabin

### Required condition:

- Doors as well as front and back parts are complete, not deformed and fully functional
- Windows in good condition without and significant scratches
- Wiper blades and windscreen washing system fully functional
- All cabin functions are usable (front and windscreen wipers, heater and ventilation, cabin lighting, roof hatch, mirror, heatable rear window, radio, window opening)





**Unacceptable:**

- Cabin struts and/or cabin parts (roof, doors, front window, rear windscreen) not complete, damaged and/or deformed
- Functionally restricted accessory parts







Jungheinrich  
Plants, Sales and  
Services Europe  
ISO 9001/ISO 14001



Jungheinrich trucks  
conform to the European  
Safety Requirements.

**ECR Equipment -  
Hawkes Bay Dealer**

400 Ellison Road,  
Hastings

0508 367 554

E: [deane@ecrl.co.nz](mailto:deane@ecrl.co.nz)

W: [www.ecrl.co.nz](http://www.ecrl.co.nz)